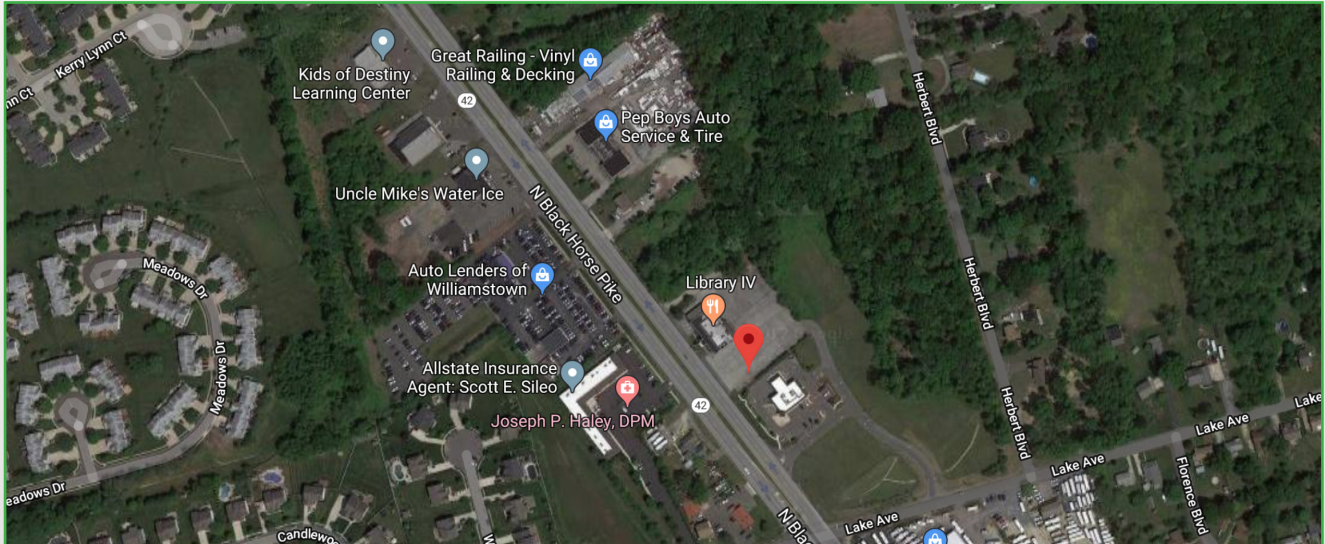




H | R | G
Hersh Realty Group
Commercial Real Estate Services

**Prime Commercial
Corner For Sale/Lease**

16 Acres Located at Signalized Corner For Development



BUILDING INFORMATION

Location: 1020 North Black Horse Pike Monroe Twp., Gloucester County, New Jersey

Size: 16 +/- acres

Asking Price: Call For Details

Availability: Immediately

Zoning: Commercial

Property/Area Highlights:

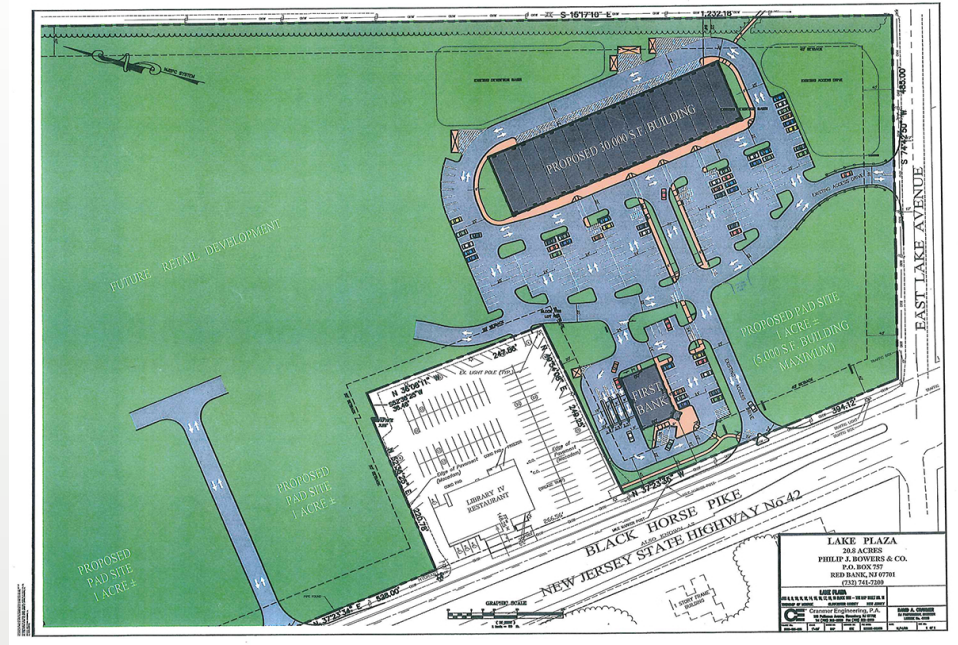
- **Signalized corner**
- **Ideal for retail, supermarkets, drug stores, QSR concepts, medical/urgent care, daycare & professional offices**
- **Join First Bank of Williamstown**
- **Surrounded by a wide variety of commercial users and dense residential neighborhoods**

HERSH REALTY GROUP • WWW.HERSHRG.COM

1771 Springdale Road • Cherry Hill, NJ 08003

Seth Hersh, President • O: 856.375.8560/C: 856.264.3439
shersh@hershrg.com

**16 Acres
Located
at Signalized
Corner For
Development**



Demographic Summary		
	3 Miles	5 Miles
Population	58,796	139,044
Median HH Income	\$72,320	\$70,875
Total Businesses	20,908	48,098
Traffic Count: 30,000 VPD		



H | R | G
Hersh Realty Group
 Commercial Real Estate Services

HERSH REALTY GROUP • WWW.HERSHRG.COM

1771 Springdale Road • Cherry Hill, NJ 08003

Seth Hersh, President • O: 856.375.8560/C: 856.264.3439

shersh@hershrg.com

The foregoing information was furnished to us by sources which we deem to be reliable, but no warranty or representation is made as to the accuracy thereof. Subject to correction of errors, omissions, change of price, prior sale or withdrawal from market without notice.